



LET'S RECYCLE RIGHT!®

A TOOLKIT FOR CREATING
A SUCCESSFUL
RECYCLING PROGRAM



TABLE OF CONTENTS

1. Why recycle and why recycle right
2. Setting up for successful recycling
3. Talk with your recycling hauler
4. Colors, bins, lids and placement *matter*
5. Standardized labels for your bins and lids
6. Properly adhere the labels to bins, lids and dumpsters
7. Engaging your custodial service teams
8. Communicating your program
9. Measuring success and saving money
10. Tips for choosing 'Compostable' products
11. A cheat sheet of "Must do's and don'ts" for recycling success!





WHY RECYCLE AND WHY RECYCLE RIGHT



When done properly, **recycling is the #1 action** that humans can take to improve our existence on this planet. Recycling conserves water, energy and other natural resources, prevents waste from going into oceans, mitigates climate change, protects human health, creates jobs and helps businesses save money.





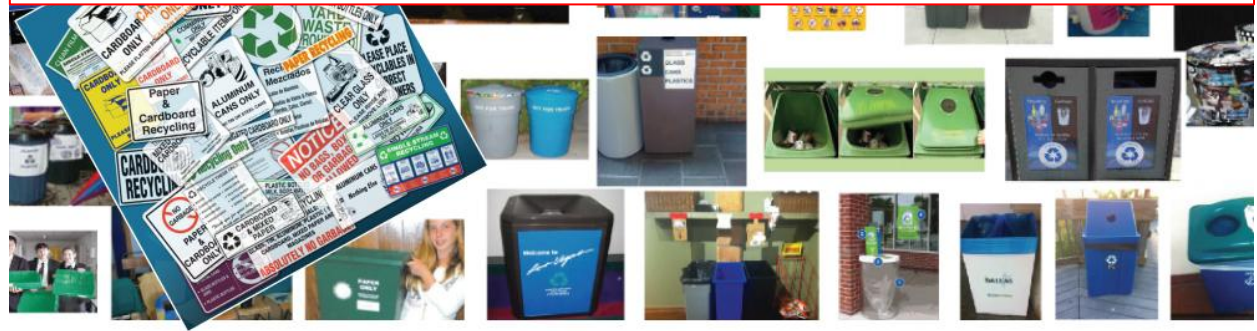
SETTING UP FOR SUCCESSFUL RECYCLING

However, in order for recycling to work, it requires people to be able to recycle easily and *properly*.

It's critical that businesses, organizations, schools and cities set up their recycling programs using society-wide standards and consistent best practices to make it easy for the public to recycle more and recycle *right*, wherever they might be.



Inconsistent looking bins and labels cause public confusion and result in 'garbage' being thrown in recycling bins.
Confusion causes recycling to fail.





TALK WITH YOUR RECYCLING HAULER

As a first step, talk with your recycling hauler to confirm the items that are recyclable and ask how they want you to collect the recyclables. Their answers will dictate how many bins you need and which standardized labels you will need to use.



1. Ask your recycling hauler:
 - What recyclables should we be collecting in our recycling bins?
 - How should the recyclables be collected? For instance, should paper, metal cans, plastic bottles and glass containers be collected in one bin, or do they need to be collected separately?
 - Can you (your recycling hauler) perform an audit of our recycling levels periodically?

TIP: Choose recycling haulers whose revenue source is reliant only on recycling - they will be motivated to help your program succeed. In other words, try to avoid hiring recycling haulers that also own landfills.



COLORS, BINS, LIDS AND PLACEMENT MATTER



Choose bins and lids that meet the recycling color standards, if possible:

- Blue Bins are for Recyclables
- Green Bins are for Compostables
- Black Bins are for Trash/Landfill



These style bins are great for public facing areas. The standardized labels are well displayed.



Choose lids that help influence public behavior such as this example for paper recycling. The standardized labels are created for these types of lids, as well.



There are metal bins designed for upscale and luxury spaces. The standardized labels can be created to fit those style bins and lids.

TIP: Instruct your custodial team to always keep your recycling bins, trash bins, and if you compost-- your compost bins side-by-side. Ideally, have the recycling bin on the left, the compost bin in the middle and the trash bin on the right.



BEST PRACTICES FOR LINING YOUR BINS

Most haulers **do not accept recyclables that are placed in plastic liners**, but if you must use plastic bags to line your bins follow these best practices:

- Use light blue or clear bags to line the recycling bins.
- Use compostable liners to line compost or food waste bins.
- Use black bags to line trash bins.

When placing recyclables in an outdoor dumpster, be sure your custodial staff knows to **empty the loose recyclables into the dumpster and throw the plastic liner in the trash**. To reduce excessive plastic waste and save money you can opt out of using liners.



Blue for Recycling



Green for Compost



Black for Trash



STANDARDIZED LABELS - RECYCLING/COMPOST

The society-wide standardized labels for recycling bins, created by the nonprofit organization, Recycle Across America, are proven to be the #1 solution to help people recycle right! They have been proven to increase recycling levels 50-100% and to dramatically decrease the amount of 'garbage' being thrown in recycling bins.





ENGAGE YOUR FACILITY TEAM - NO PLASTIC BAGS

Engage your facility team to ensure they know the best practices and rules.

To prevent plastic bags from going into the recycling dumpster, a **“no plastic bags!”** label should be displayed on custodial recycling carts and on recycling dumpsters. All ‘traditional’ consumer recyclables (such as cans, plastic bottles and cardboard) should be put in the recycling dumpster without being contained in plastic bags. Plastic bags jam and damage recycling processors’ equipment and can subsequently cause injuries to employees trying to unjam the machinery.



ABSOLUTELY NO PLASTIC BAGS IN RECYCLING DUMPSTERS ... EVER!



Empty the recyclables into the recycling dumpster. If you have a plastic bag, put it in the trash or recycle it with a designated plastic bag recycler.



LABEL INSTALLATION

Ensure the Surface of the Bin is:

- Clean
- Dry
- Debris Free
- Oil Free
- Warm



Before installing the standardized labels, properly prep the bins by cleaning the surface, removing any debris or existing labels that could cause a problem with adherence or appearance, and make sure the surface is dry and not greasy. If the surface of the bin is slippery plastic. It is recommended to wipe the surface with rubbing alcohol and allowing it to dry to ensure a better adherence.

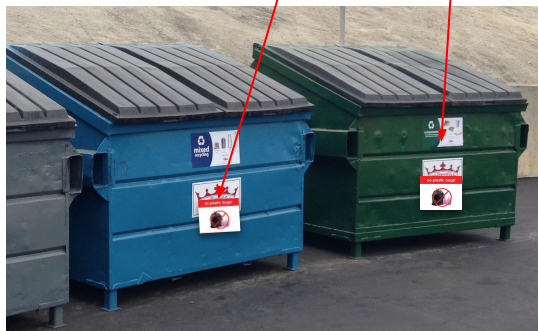
If applying labels to outdoor bins, it is best to install the labels when the temperatures are between 55-85 degrees fahrenheit.

Always follow the same pattern by having the recycling bin on the same side and the trash bin on the other side throughout your facility,

Also, make sure the labels are placed on the bin straight and at the same levels.



PROPERLY ADHERING THE LABELS



If you've purchased new plastic bins, ALWAYS allow the bins to *breathe (aka off-gas)* for a day or two before applying the labels. For new or old bins, clean the surface to remove oil, dust, dirt and other things that can interfere with the labels sticking properly -- and make sure the surface is dry. As an added assurance, wipe the surface of the bin or cart with rubbing alcohol and allow to dry before applying the labels.

The standardized labels should be applied in a place that will not be obstructed. If you have plastic liners in your bins, make sure the labels aren't put in a spot on the bins that could cause them to be covered by the excess plastic liner. A clear view of the labels from all angles is vital. Make sure the recycling bins and trash bins are always side-by-side and always with the recycling bin on the left and the Trash Bin on the right, for added consistency.

Ask your recycling hauler to paint the dumpsters the same color as your recycling bins and to add the standardized labels to the dumpsters. Also, add the "no plastic bags!" label to your recycling and compost dumpsters. This will help your custodial staff put the correct items in the correct dumpsters.



ENGAGE YOUR CUSTODIAL SERVICE TEAMS!

We cannot stress this enough ... **engage and educate your custodial staff about the recycling program!** The point of failure with recycling often happens when the staff isn't educated about the dos and don'ts or they simply aren't engaged. Your recycling program might be stellar, but if the custodial staff is putting *plastic bags full of the recyclables* into the recycling dumpster, all of those recyclables might be ending up in the landfill; sadly the investment in your program and the environmental progress will be lost.

- Provide the toolkit and walk through it with your custodial staff. Repeat training often.
- Set up the program so that it is easy for the custodial staff to follow using the best practices that we've listed in this toolkit. It will help your recycling program succeed and be worthwhile financially.





COMMUNICATING YOUR RECYCLING PROGRAM

LET'S RECYCLE RIGHT!

Properly communicating and engaging all stakeholders in your recycling program will ensure the success of your recycling program.

Be proud of your organization's recycling efforts and communicate the "Let's recycle right!" campaign to all of your employees, students, visitors, guests and customers.

Send out newsletters, announcements and videos to let everyone know that you're ramping up your recycling program and how important it is for the environment and the economy that we all recycle *right!*

AMERICANS THROW AWAY
2.5 MILLION
PLASTIC BOTTLES
EVERY HOUR
Kristen Bell

let's

let's recycle right...here's how:
The standardized labels on recycling bins make it easy for people to recycle more and recycle right! It's that simple.
For recycling tips and to choose the standardized labels that work for your recycling program, visit: recycle.across.america.org
a non-profit solution





MEASURING SUCCESS AND SAVING MONEY

Contact your city, county and state waste management and government officials to ask if there are any financial incentives for your organization to recycle and decrease your organization's trash volumes. For example, in Minneapolis, MN the combined state, county and city tax on trash hauling is more than 75%. Meaning if you pay \$1000 for a *trash* dumpster and trash hauling, your bill will be more than \$1750 with tax included. But in Minneapolis, there are no taxes charged on *recycling* dumpsters, services or hauling of recyclables.



MONITOR YOUR RECYCLING FOR MONEY

Ask your waste and recycling hauler to help evaluate your building's waste and recycling volumes. When requested, your hauler should be willing to help measure the volume of your trash and the volume of your recyclables. Ask them to provide a complete report including itemized fees for your landfill and separate fees and taxes specifically for your recycling. It is up to YOUR organization to request this audit and information if you intend to capture savings.

When possible:

1. Reduce the size of your landfill dumpsters.
2. Reduce the frequency of your landfill hauling.
3. Increase the size of your recycling hauling.
4. Increase the frequency of your recycling hauling.

TIP: Every organization should increase its recycling levels, recycling dumpster sizes, and frequency of hauling recyclables. This will lead to a decrease in landfill/trash dumpster services which can equate to thousands of dollars in savings for your organization. Once you've done a baseline audit of your landfill/trash volumes versus your recycling volumes, look for every opportunity to decrease landfill waste and increase 'clean' recycling volumes so that you can capture the financial benefits of recycling.



TIPS FOR CHOOSING COMPOSTABLE PRODUCTS

Composting your organization's food waste and compostable products can save your organization money by diverting significant amounts of material away from landfills while providing nutrient rich soil supplements to farmers.

Remember to always use 'well marked' 100% compostable, certified liners in your compost bins, and keep your compost bins conveniently placed alongside your recycling bins and trash bins in food service areas.

If you offer compostable dishware and serving-ware, make certain that each product is well marked as compostable.



TIP: Do not mix and match ... in other words do not offer some products that are compostable and other products that aren't compostable. Commit to fully compostable products or no compostable products - because having compostable products accidentally mixed in with traditional recyclables is very problematic for the recycling processors and having traditional plastics going into the compostables bin is equally problematic for the composter.



DO'S AND DON'TS CHEAT SHEET

TOP SEVEN “TO DOS”:

- ❑ Consult with your recycling hauler to find out what exactly can and cannot go in your bin.
- ❑ Make sure your bins are properly color coded and have proper lids.
- ❑ Place standardized labels on your bins and lids.
- ❑ Properly adhere the labels to dumpsters.
- ❑ Empty your recyclables into the larger dumpster without plastic bags.
- ❑ Engage your custodial staff.
- ❑ Communicate your program.

DON'T:

- ❑ Put plastic bags in the recycling bin.
- ❑ Place recycling bins far away from trash bins.
- ❑ Place labels on areas of the bin with uneven surfaces or that may be covered by liners.
- ❑ Place hazardous material, food, liquid, styrofoam, and other non-recyclables in your recycling stream.



Recycle Across America now has over
11 million labels in use with brands such
as...



contact us:

info@recycleacrossamerica.org

(855) 424-6522

links to more info:

- [Video: Why Standardization Matters](#)
- [Recycling Statistics](#)
- [Recycle Across America - Homepage](#)



recycle
across
america.®
let's recycle right!®

The
New York
Times

"ONE OF THE MOST IMPORTANT ENVIRONMENTAL FIXES
TAKING ROOT TODAY"



"WORLD CHANGING SOLUTION"